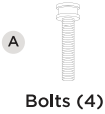
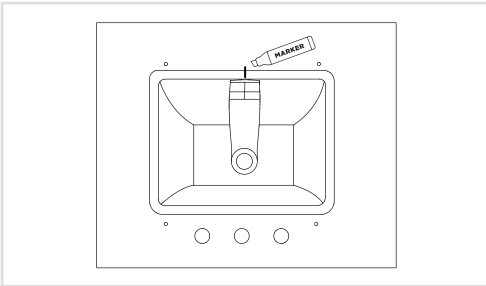


UNDERMOUNT BATHROOM SINK

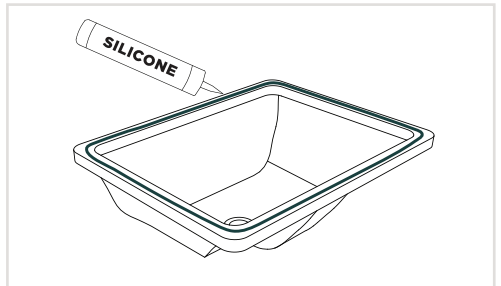
SUGGESTED TOOLS AND MATERIALS



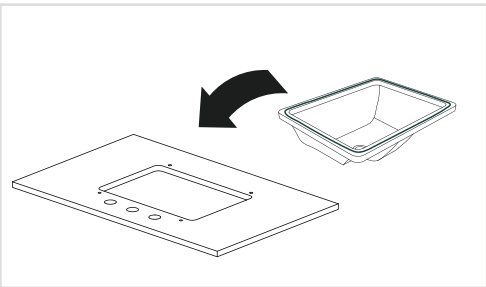
INSTALLATION



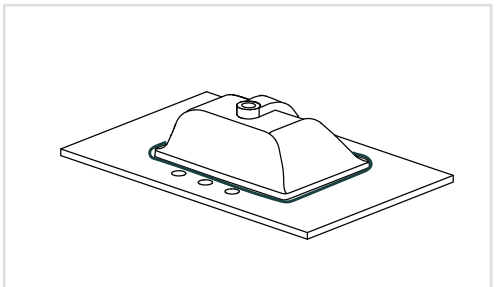
STEP 1 - PLACE & TRACE
Place the sink basin on the bottom of the countertop, making sure to center over the opening. Draw guide lines on the countertop and the basin in two locations.



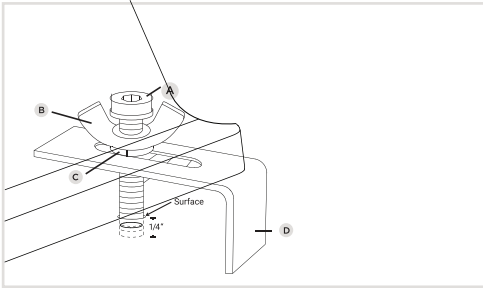
STEP 2 - PREPARE SINK BASIN
Using a caulking gun, apply a heavy amount of silicone of your choice on the top side of the sink basin edge.



STEP 3 - FLIP & SET IN PLACE
Carefully flip the sink basin over and place it so the guide lines match up in both locations.



STEP 4 - DRY & SET
Press down on the sink basin to seal the silicone. Remove any excess. Follow dry time recommendation found on your product, typically 12 to 24 hours.

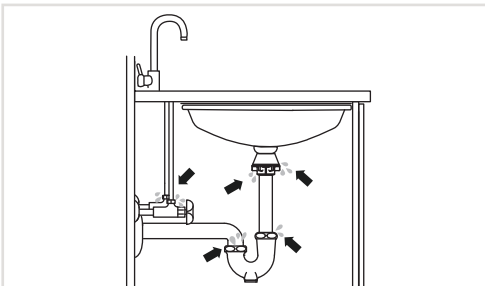


STEP 5 - ATTACH UNDERMOUNT CLIPS

Please tighten Bolt (A) into wing nut (B) slide on washer (C) and guide through Under-mount clip (D) opening into threaded bolt hole in the countertop. ONLY-Hand Tighten Bolt (A) to a depth of about 1/4" below countertop surface. Then secure the Sink with the under-mount clip (D) by Tightening wing nut (B) only



STEP 6: Check the sink beneath the cabinet in an undermount configuration.



STEP 7: Inspect connections for leaks while running water into the sink.