

HUTTON 61" DOUBLE SINK CABINET

ARIEL

W061D



BASE CABINET DIMENSIONS

60" W x 21.75" D x 18" H

FEATURES

- Solid wood frame & plywood panels
- Dovetail drawers and joints
- Soft closing doors & drawers

HARDWARE FINISHES



Satin Nickel



Satin Brass



Satin Black

AVAILABLE COLORS



White



Grey

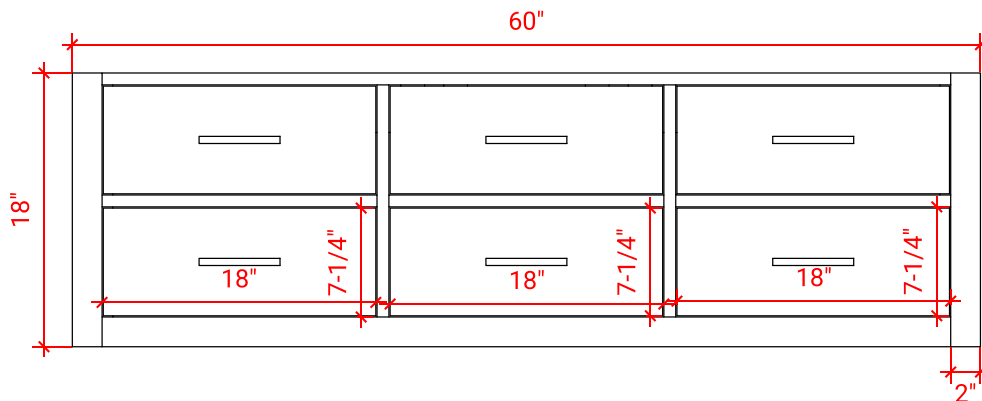


Espresso

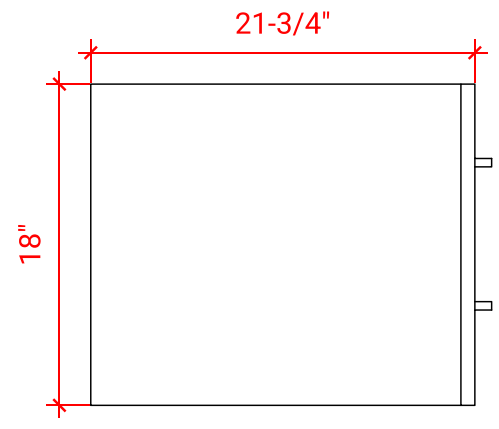


Midnight Blue

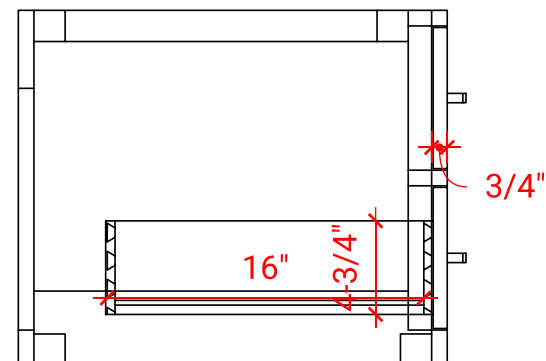
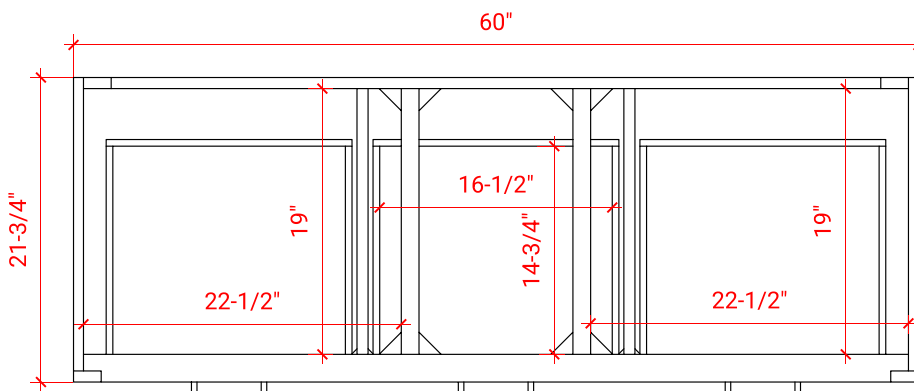
FRONT VIEW



SIDE VIEW



PLAN VIEW



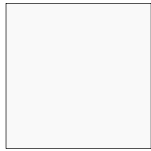
ARIEL

61" W x 22" D x 1.5" H

COUNTERTOP OPTIONS



Carrara Marble
CW-061D-OVL-CT



White Quartz
WQ-061D-OVL-CT

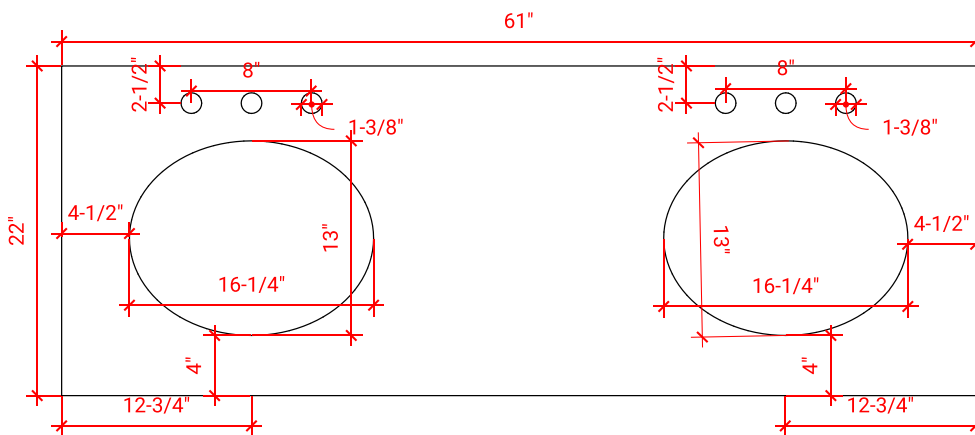
FEATURES

- Solid countertop with mitered edges & seams
- Undermount white oval sink
- Pre-drilled for 8" widespread faucet

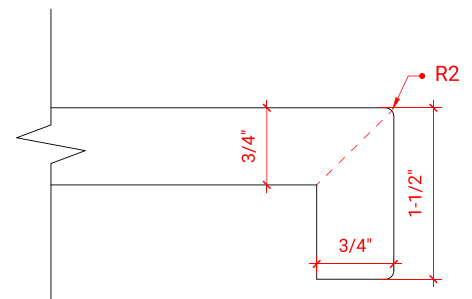
INCLUDED

- Countertop
- Matching Backsplash
- Sink

COUNTERTOP PLAN VIEW



EDGE SIDE VIEW



THREE DIMENSIONAL COUNTERTOP VIEW

