

## HUTTON 49" CENTER SINK CABINET

# ARIEL

W049S

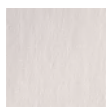
### BASE CABINET DIMENSIONS

48" W x 21.75" D x 18" H

### FEATURES

- Solid wood frame & plywood panels
- Dovetail drawers and joints
- Soft closing doors & drawers

### HARDWARE FINISHES



Satin Nickel



Satin Brass



Satin Black

### AVAILABLE COLORS



White



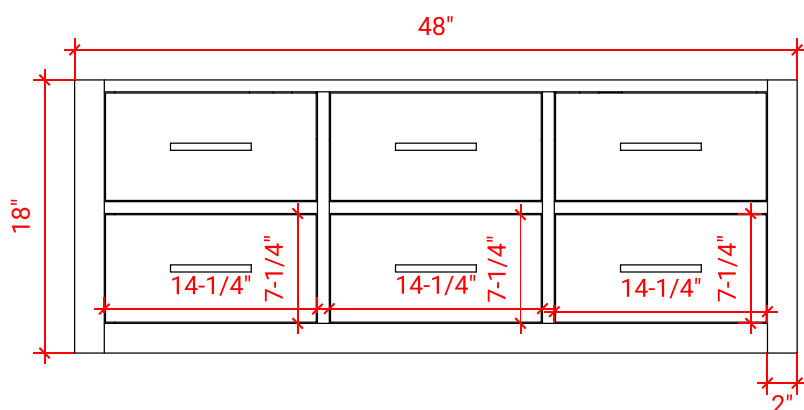
Grey



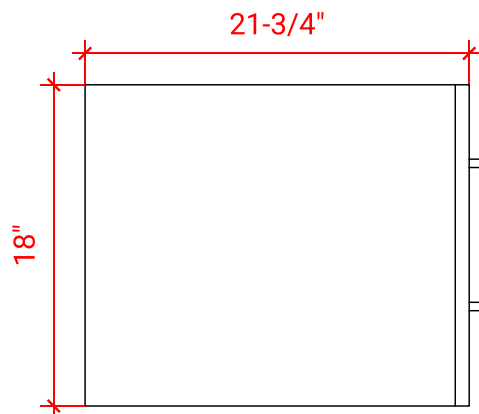
Black



FRONT VIEW



SIDE VIEW



PLAN VIEW

