

## HUTTON 55" CENTER SINK CABINET

# ARIEL

W055S



### BASE CABINET DIMENSIONS

54" W x 21.75" D x 18" H

### FEATURES

- Solid wood frame & plywood panels
- Dovetail drawers and joints
- Soft closing doors & drawers

### HARDWARE FINISHES



Satin Nickel



Satin Brass



Satin Black

### AVAILABLE COLORS



White

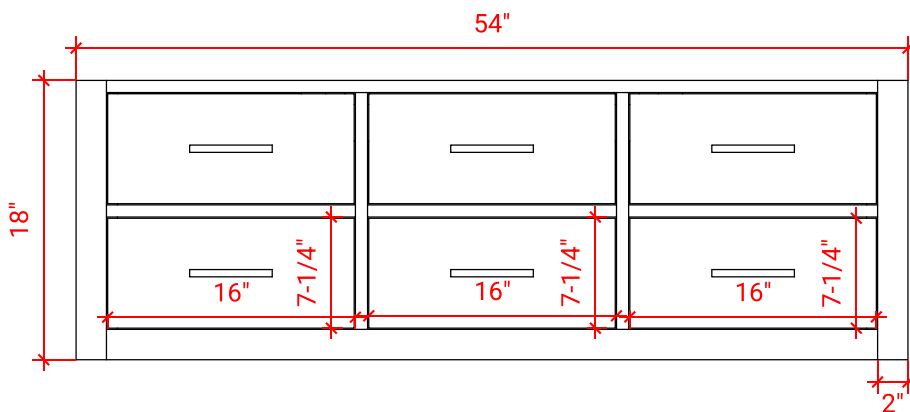


Grey

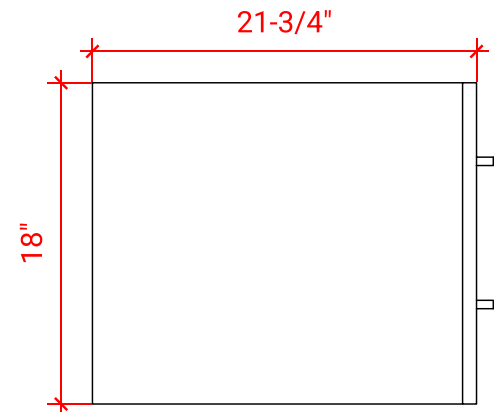


Black

FRONT VIEW



SIDE VIEW



PLAN VIEW

