

HUTTON 61" DOUBLE SINK CABINET

ARIEL

W061D



BASE CABINET DIMENSIONS

60" W x 21.75" D x 18" H

FEATURES

- Solid wood frame & plywood panels
- Dovetail drawers and joints
- Soft closing doors & drawers

HARDWARE FINISHES



Satin Nickel



Satin Brass



Satin Black

AVAILABLE COLORS



White



Grey

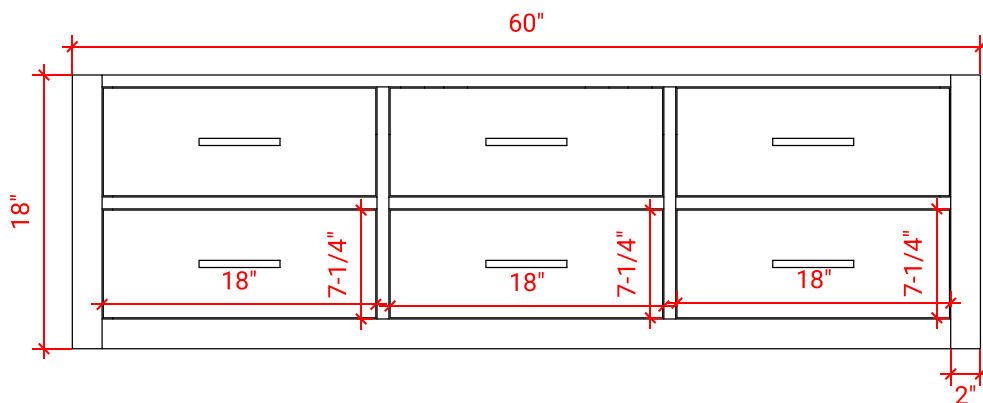


Espresso

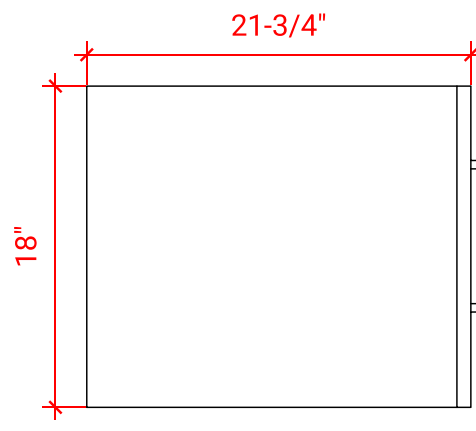


Midnight Blue

FRONT VIEW



SIDE VIEW



PLAN VIEW

