

BRISTOL 48" SINGLE SINK BASE CABINET

ARIEL

H048S



BASE CABINET DIMENSIONS

48" W x 21.5" D x 33.5" H

FEATURES

- Solid wood frame with engineered wood panels
- Dovetail drawers and joints
- Soft closing doors & drawers

HARDWARE FINISHES



Brushed Nickel



Satin Brass



Matte Black



Polished Chrome

AVAILABLE COLORS

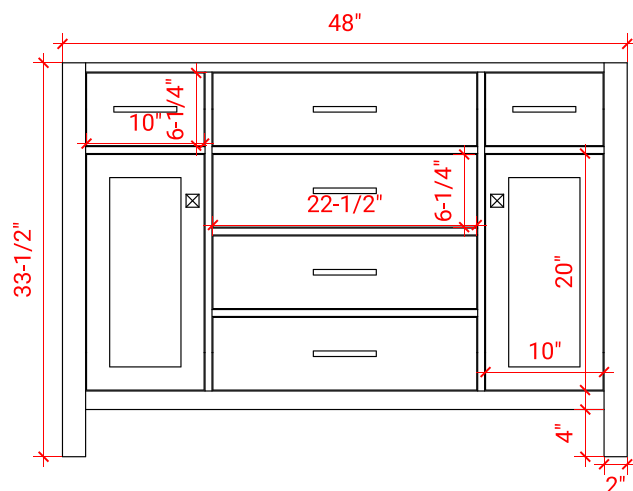


White

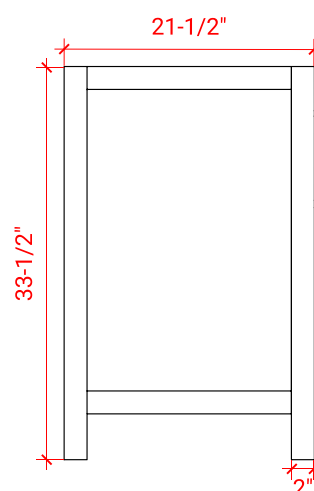


Grey

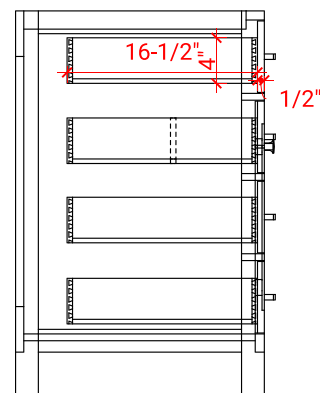
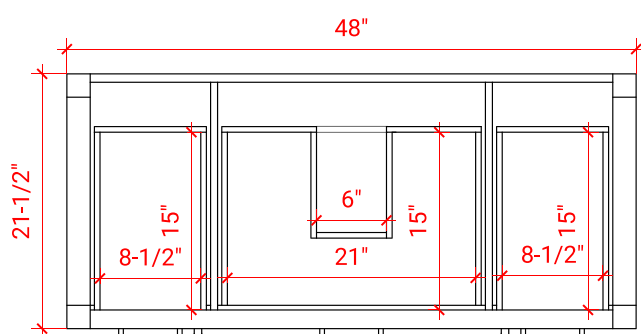
FRONT VIEW



SIDE VIEW



PLAN VIEW



ARIEL

49" W x 22" D x 0.75" H

- Solid countertop with mitered edges & seams
- Undermount white oval sink
- Pre-drilled for 8" widespread faucet

- Countertop
- Matching Backsplash
- Oval Sink

Technical drawing of a rectangular panel with a central oval cutout and three mounting holes. The dimensions are as follows:

- Overall width: 49"
- Overall height: 22"
- Distance from left edge to oval center: $16\frac{3}{8}"$
- Distance from bottom edge to oval center: $16\frac{1}{4}"$
- Oval height: 13"
- Distance from oval top to top edge: $1\frac{3}{8}"$
- Distance between mounting holes: 8"
- Distance from top edge to mounting holes: $2\frac{1}{2}"$
- Distance from oval bottom to bottom edge: 4"
- Distance from left edge to mounting holes: $24\frac{1}{2}"$

Isometric view of a rectangular plate with dimensions 49 inches by 22 inches by 4 inches. The plate has a central circular hole with a diameter of 12 inches and four smaller circular holes arranged in a 2x2 grid. The thickness of the plate is 1/2 inch.