

## CAMBRIDGE 49" CENTER SINK CABINET

# ARIEL

A049S



### BASE CABINET DIMENSIONS

48" W x 21.5" D x 34.5" H

### FEATURES

- Solid wood frame & plywood panels
- Dovetail drawers and joints
- Soft closing doors & drawers

### HARDWARE FINISHES



Satin Nickel



Satin Brass



Satin Black

### AVAILABLE COLORS



White



Grey

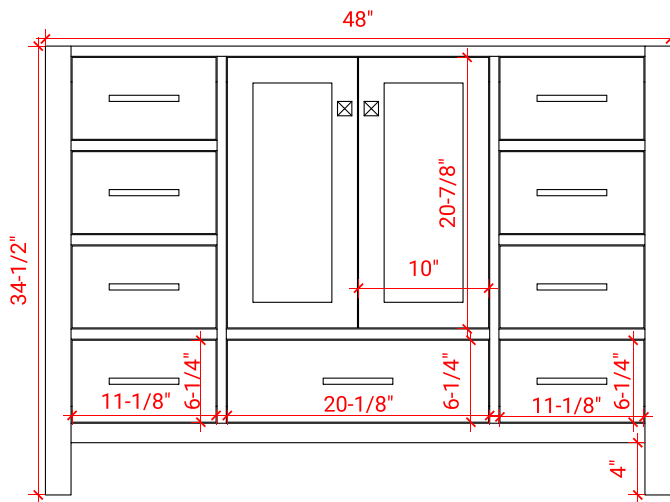


Espresso

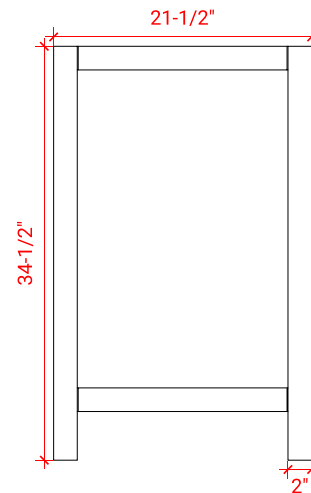


Midnight Blue

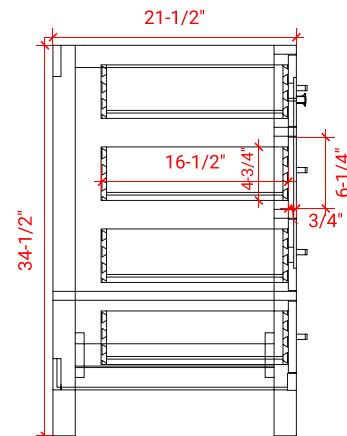
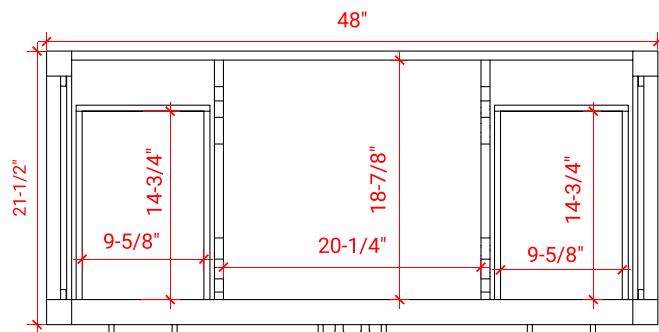
FRONT VIEW



SIDE VIEW



PLAN VIEW



## 49" RECTANGLE SINK THIN COUNTERTOP

# ARIEL

### OVERALL DIMENSIONS

49" W x 22" D x 0.75" H

### COUNTERTOP OPTIONS



Carrara Marble  
CW2-049S-REC-CT

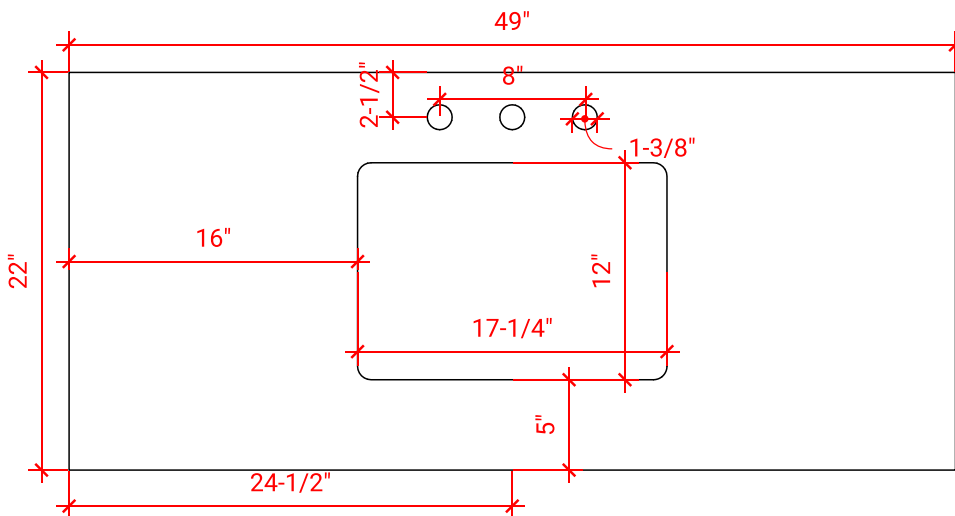
### FEATURES

- Solid countertop with mitered edges & seams
- Undermount white rectangular sink
- Pre-drilled for 8" widespread faucet

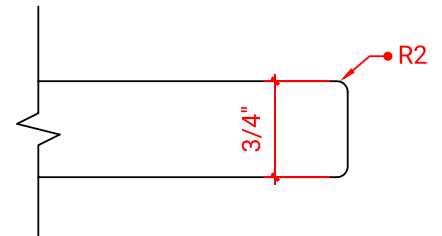
### INCLUDED

- Countertop
- Matching Backsplash
- Sink

### COUNTERTOP PLAN VIEW



### EDGE SIDE VIEW



### THREE DIMENSIONAL COUNTERTOP VIEW

